

## **APPENDIX A**

### **Portfolio of Artworks**



*Murderers Creek*  
2018-19  
Ink and earth on paper, steel, lead, wood  
84 x 84 x 39 inches  
Photo by Kyle Knodell

Private Collection



<  
*Murderers Creek (detail)*  
2018-19  
Ink and earth on paper, steel, lead, wood  
84 x 84 x 39 inches  
Photo by Kyle Knodell



*Bulbancha (Green Silence)*  
2019  
Shellac ink, Mississippi River mud, Spanish moss on paper  
132 x 204 inches  
Installation view: *Land Akin*, Smack Mellon, Brooklyn, New York  
Photo by Etienne Frossard



<  
*Bulbancha (Green Silence)*  
2019  
Ink, Mississippi River mud, Spanish moss on paper  
132 x 204 inches  
Photo by Eric Waters



*Bulbancha (Green Silence)* (detail of Mississippi River mud)  
2019  
Shellac ink, Mississippi River mud, Spanish moss on paper  
132 x 204 inches  
Photo by Eric Waters



17th Century  
2021  
Shellac ink on paper, and lead, steel  
59.25 x 93.25 x 5.5 inches (overall)  
Photo by Etienne Frossard

Private collection



< >  
*It Came From the North (angle)*  
2021  
Shellac ink, earth from the Green-Wood Cemetery,  
New York City demolition debris, glass microbeads  
from the NYC DOT on paper, and lead  
112 1/2 x 222 x 6 inches  
Photo by Jason Mandella

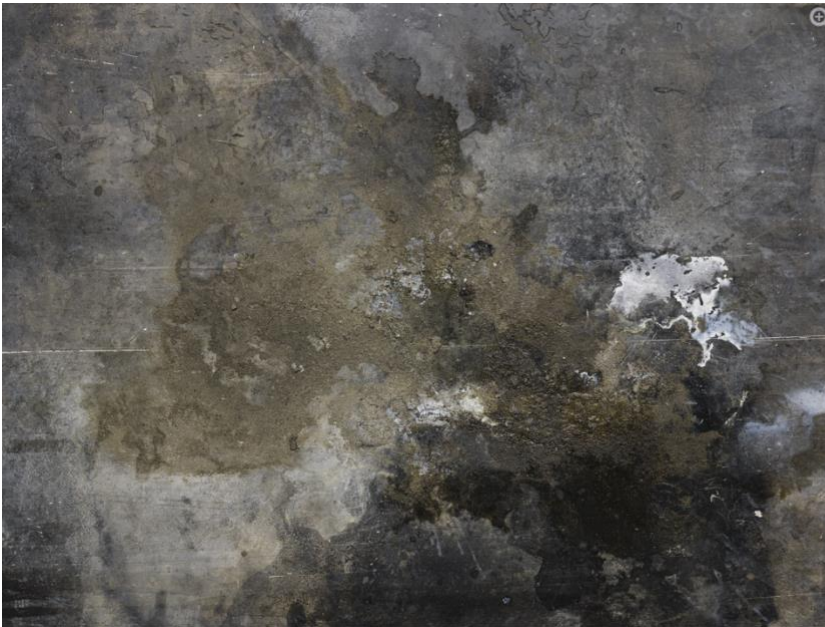
Installation view: Greater New York 2021, MoMA PS1,  
Queens, New York.





>

*In the Wake of . . .*  
2021  
Sumi and shellac ink, earth from The Green-Wood Cemetery, demolition debris from downtown Brooklyn on paper, and lead, sound  
198 x 652 x 7 inches  
duration: 50 minutes  
Installation view: BRIC House, Brooklyn, New York.  
Image courtesy of BRIC. Photo by Sebastian Bach



<

*In the Wake of . . . (detail of demolition debris)*  
2021  
Sumi and shellac ink, earth from The Green-Wood Cemetery, demolition debris from downtown Brooklyn on paper, and lead, sound  
duration: 50 minutes  
198 x 652 x 7 inches

>



>

*As Night Devours the World*  
2022  
Shellac ink, silt from a Garrison stream, Hudson Highlands mica on paper, and lead, steel  
65 1/4 x 73 x 4 3/4 inches  
Photo by Jason Mandella



>

*The Discovery of Slowness*  
2022  
Shellac ink, silt from a Garrison stream, Hudson Highlands mica on paper, and lead, steel  
46 x 122 x 4 inches  
Photo by Jason Mandella



>

*Of Mad and Willful Nature*  
2022  
Shellac ink, Hudson Highlands mica on paper and lead, steel  
50 x 73 1/2 x 3 inches  
Photo by Jason Mandella